

**Magnet Mount Broadband Antennas**

Frequency Range (MHz)	Input Power (Watts)	Gain (dBi)	VSWR (max)	Cable Length (m)	Connector Type	Antenna Model Number
694 to 894 1700 to 2700	10	3.0	2.0:1	3	SMA(m)	2000-1645-R
698 to 2700 3000 to 6000 1575 (GPS)	NA (receive only)	2.0 to 5.0 +26 dB (GPS preamp)	3.5:1	3	N(m) (x2) SMA(m)	2000-1647-R
750 to 1250 1650 to 2700	10	3.0 5.0	2.0:1	3	N(m)	2000-1646-R
1700 to 6000	10	3.0	2.0:1	3	N(m)	2000-1648-R

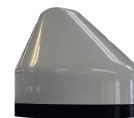
**2000-1645-R** Magnet mount multiband broadband antenna.  
 Frequency Range 694 MHz to 894 MHz  
 1700 MHz to 2700 MHz  
 Input Power 10 W  
 Gain 3.0 dBi  
 VSWR 2.0:1  
 Size 6.7 cm x 9.2 cm  
 Cable Length 3 m  
 Connector Type SMA(m)



**2000-1646-R** Magnet mount multiband broadband antenna.  
 Frequency Range 750 MHz to 1250 MHz  
 1650 MHz to 2700 MHz  
 Input Power 10 W  
 Gain 3.0 dBi (band 1), 5.0 dBi (band 2)  
 VSWR 2.0:1 (max)  
 Size 4.3 cm x 9.2cm  
 Cable Length 3 m  
 Connector Type N(m)



**2000-1647-R** Magnet mount broadband integrated GPS antenna, requires 3 V to 5 V for GPS.  
 Frequency Range 698 MHz to 2700 MHz  
 3000 MHz to 6000 MHz  
 1575 (GPS)  
 Input Power NA (receive only)  
 Gain 2.0 dBi (750 to 1200 MHz)  
 5.0 dBi (1700 to 2700 MHz)  
 5.0 dBi (3000 to 6000 MHz)  
 5.0 dBi (GPS antenna), 26.0 dB (GPS preamp)  
 VSWR 3.5:1  
 Cable Length 3 m  
 Connector Type N(m) (x2), SMA(m) (GPS)



**2000-1648-R** Magnet mount multiband broadband antenna.  
 Frequency Range 1700 MHz to 6000 MHz  
 Input Power 10 W  
 Gain 3.0 dBi  
 VSWR 2.0:1 (max)  
 Size 6.7 cm x 9.2 cm  
 Cable Length 3 m  
 Connector Type N(m)

